



**SPUD NIGERIA  
LIMITED**

**Expectation meets Expertise**









## COMPANY OVERVIEW

### Business Description

SPUD Nigeria Ltd. is an indigenous Oil & Gas servicing company established to meet the growing need for professional indigenous companies, that provides support and partners with major corporations to improve the effectiveness of their business and operations.

We are fully equipped to deliver top-notch business solutions, in relation to engineering and technical services; with a core focus on project design, engineering, and management. We are bold in the execution of our plans and guarantee a consistent high standard in the services delivered.

Our philosophy is that every business is unique, therefore, our team of committed and dynamic professionals are trained to be adaptive to new opportunities and varied business environments, in order to meet the clients' business objectives.

### Company Background

SPUD Nigeria Ltd. was established in 2009, in response to the need for indigenous experienced, competent engineering and technical services to the Oil & Gas sector.

We maintain a range of diverse services that include project engineering, well intervention, pipeline services, oilfield and well production optimization, operation and maintenance of oil & gas facilities, procurement and general services.

We offer specialized services in project management and general engineering, OCTG, offshore vessels, access control, and equipment procurement and lease services.

## OUR MISSION STATEMENT

SPUD Nigeria Limited aspires to a lead market position by delivering first class engineering and project management services. A strategic outreach for international corporate and technical alliances to deepen local content capability, whilst maintaining top-tier quality standards and first class health and safety practices.

## OUR VISION STATEMENT

Providing engineering and project management services, utilizing our experience and expertise to meet our client's expectations:

- Developing new client relationships while maintaining robust client loyalty; fostering a loyal customer base with integrity and excellent service delivery.
- Providing optimal engineering solutions and best in class project management; Guaranteeing best value, flexible and adaptive business solutions, cost effectiveness and integrated engineering solutions in compliance with the latest Front-End Engineering Design to match international and local codes and standards across various project portfolios.
- Organizational Learning: Continuously improving as an embedded practice for our business solutions, proactive planning for the design blueprint for future business development and aligning on strategic position to effectively maneuver rapidly fluctuating global, regional, and local market conditions.
- Attract, Develop and Retain Top Talent; Determine competency gap, identify and recruit top talents and potential industry leaders to enhance the organization's growth, and provide the company's platform for employees to attain their full potential.

## OUR CORE VALUE



INTEGRITY



PROFESSIONALISM

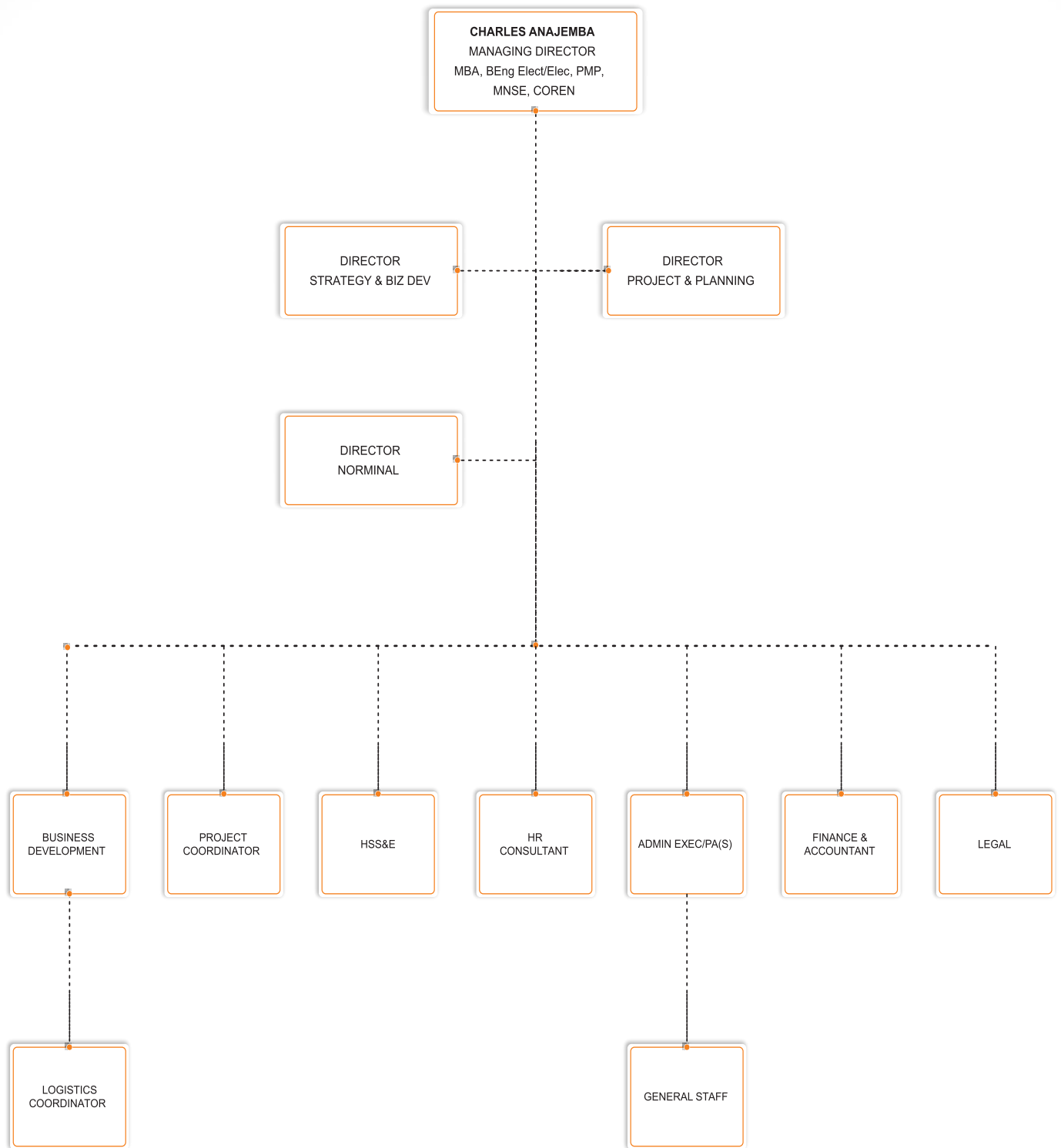


CONSISTENCY



CUSTOMER'S SATISFACTION

# SPUD MANAGEMENT TEAM











## PRODUCTS AND SERVICES

SPUD Nig. Ltd. is involved in large scale project engineering and management, front end engineering design, engineering construction and restoration, procurement, oil & gas production optimization services.

Also, we are in formal collaboration with global leading OEMs and Oil & Gas servicing companies to provide standard production optimization services. We have viable and long term solutions to ensure our clients accelerate first oil, reduce OPEX, maximize production and recovery, and defer abandonment of the oil field and wells.

In summary, SPUD Nig Ltd, its Subsidiaries & Technical Partners Offer:

- Project Engineering/Management
- Skilled and Unskilled Man-power
- Supply/ Installation of Crude Oil Export Pump
- Supply/ Installation of Gas lift instrument compressor
- Water Injection Pump
- Drilling and Well Completion Services
- Gas Dehydration /Glycol Regeneration Unit
- Mobile Offshore / Onshore Production Units (MOPU)
- Mid to large scale OCTG solution services





- Engineering Procurement Construction (Fabrication) and Installation
- Procurement of Steel Pipes (Bare Steel)
- Compression Concrete Weight & 3LPE/3LPP coating
- Heavy duty lifting & haulage services
- Debottlenecking brown fields with flow assurance & gas compression
- Total solution packages on production optimization
- Integrated Produce Water management solutions
- Asset Integrity Management



## Electrical Engineering

### Our services include:

- Interpretation of Engineering Design
- Installation & Maintenance of Electrical Equipment
- Panels, Battery Systems
- Industrial & Domestic Cabling Projects
- High Tension Power Routes
- Construction of Power Huts & Hook – Ups
- Installation of Earthing Systems & Cathodic Protection
- Inspection, Testing & Commissioning of Electrical Installations

## Fire & Safety Engineering

### Our Services Include:

- Feasibility / Investigative Studies on Designed Structures to be erected
- Fire Materials/ Equipment Procurement/ Servicing
- Installations of Electro Safety Systems such as Fire Alarm Systems, Smoke Detectors, Automatic Sprinkler, Hydrant Systems, Hose Reels
- Fumigation of Sites
- Waste Disposal Services
- Maintenance / Inspection of Fire Equipment
- Training / Commissioning





## **Quality Assurance & Control Services**

### **Our Services Include:**

- Provision of QA/QC facilitators
- Preparation of Pre-Mobilization Quality & CASHES Plans
- Project Site Inspection & Engineering Audit
- Quality Systems Design & Implementation

## **Mechanical & Structural Engineering**

### **Our services include:**

- Erection of Support Structures
- Mechanical Instrumentation & Transmission
- Corrosion Control (Blasting & Painting)
- Construction of Pipeline Design & installation of Central A/C system
- Design & Construction of Plumbing Systems & Tanks
- Plant Hire / Leasing & Maintenance Services
- Maintenance of Production Equipment – Pumps, Valves & Air Compressors

## PROJECT MANAGEMENT

SPUD Nigeria Ltd. Project Management Service is built on integrity, experience, and professionalism. Our experienced project management team delivers project deliverables on-time and within budget with integrity. We take care of every aspect of the project management process and bring the entire SPUD project team to work for our clients. Using a well-established project management process, tools, and techniques, we will define a specific set of activities and timeline to keep the project on target during the planning, execution, and closeout of the project. Our industry-recognized project management methods include project risk management, detailed scheduling, probabilistic time, and cost estimation.

## CIVIL CONSTRUCTION







SPUD offers a comprehensive range of civil construction / project site inspection and testing services. This includes various specialized disciplines, methods, and techniques. These services extend from the provision of complete site project teams (undertaking all facets of site inspection, testing, and associated technical services) to single individuals undertaking a specific assignment. Our team of construction professionals offers a single-source solution for all of our clients' needs. Our network of local offices and partners enable us to offer our clients the dual advantage of a strong local presence and broad geographic reach. At Spud Nigeria Ltd., we offer a flexible portfolio of high-quality technical-based solutions tailored to specific client requirements and delivered by highly qualified personnel. SPUD provides quality operational solutions for clients in the fast-growing real estate and construction industry in Nigeria.









S/N	PROJECT DESCRIPTION	CLIENT
1.	NNPC & JV Export Pipeline Construction	
2.	Engineering Design, Construction / Installation & Commissioning of Natural Gas Pressure Reduction & Metering Skid Pressure Reduction & Metering Skid Benin	
3.	PVT Crude Oil Sampling & Analysis NNPC JV	 
4.	Otumara-Escravos Extension of the NNPC JV Crude Export Line Alternative Evacuation	
5.	Gbetiokun to Adagbassa Crude Oil Evacuation Pipeline in NNPC JV	



## HSE Policy Statement

SPUD Nigeria Ltd. is committed to managing an occupational Health and Safety System that promotes a safe working environment for all employees, contractors, customers, and visitors to our sites. Accordingly, SPUD Nigeria Ltd. aims to:

- Do all that is reasonably practicable to prevent personnel injury or damage to the health of employees and other persons involved in its operations by assessing the hazards and associated risks through a structured Risk Management Programme.
- Ensure compliance with all legal and other requirements to which we subscribe that relates to Occupational Health and Safety Hazards.
- Inspire a culture of continuous improvement.
- Set measurable occupational health and safety objectives and regularly appraise performance.
- Ensure adequate emergency preparedness plans in place to limit the adverse consequences of any failure in safety preventive measures.
- Communicate this policy to all employees, contractors, and suppliers who work on our sites with the intent of making them aware of their occupational health and safety obligations.
- Ensure occupational health and safety has equal importance with all other business activities.
- Ensure this policy is readily available to interested parties.
- Ensures responsibility for implementation of this policy follows the line management structure with the ultimate responsibility of residing with the board of directors.

## PARTNERS

---



## CLIENTS

---





## MARKETS

SPUD operates primarily in Nigeria with its head office in Port Harcourt, the hub of the oil and gas industry in Nigeria. Our focus is to render engineering solutions and services to the Nigerian Oil and Gas sector.

Primarily, Spud's strategy and tactics is to monitor the achievement of targets set for various sub-sectors in Nigeria, determine the opportunity and proffer solution. We are fostering a strategic alliance between international and local companies based on legally binding laws such as the Local Content Act.

As procurement professionals and project management experts, SPUD intends to domesticate project execution; starting from Front-End-Engineering-Design (FEED), EPCI, commissioning and project completion.





## CORPORATE SOCIAL RESPONSIBILITY (CSR)

As a national company, we understand the needs of our immediate host community and the role we have to play in contributing positively to its development. We are working with Local Government agencies and NGOs on committing some of our resources through our scholarship scheme, to train and equip high performing college graduates in relevant industry skills such as formal education, welding and fabrication as a way to match their skills for the opportunities in the industry.





## COMPANY RECOGNITION

**Brand Promotion:** SPUD develops its brand and image primarily from its excellent service delivery and corporate integrity. We are currently working to build a stronger brand equity in the Oil and Gas sector.

**Brand Identity:** Our projections as a business are to be celebrated as a company that thrives on excellence, perfection in our projects execution and helps companies and government parastatals to achieve profitability by leveraging on expert project management skills and methodologies.

**Industry Recognition:** Based on our track record of delivering quality engineering services and business integrity, we are strategically positioned as a business to tackle the inefficiencies in small and large scale enterprises in the Oil & Gas sector.

**Trust:** SPUD has business partners internationally and locally in the private and public sector. We deliver on our promise of excellence and work in teams that have undergone training on the Ethos of reliability, consistency, corporate and personal integrity.

## EXPERTISE AND STABILITY

**Highly knowledgeable workforce:** Our workforce brings to the table, experience from diverse backgrounds and fields. We have a highly knowledgeable workforce that can deliver on any project.

**Skilled Labour:** We have a skilled labour force from various sectors of the Nigerian economy. We retain individuals with qualifications and competence from varying fields and we count on our ingenuity and innovative spirit in the execution of our projects.

**Quality, Health & Safety Assurance:** At SPUD we are committed to ensuring that our services comply with international standards and industry best practices.

The health and safety of our workers are top priority, therefore we ensure that in the course of delivering on our jobs, HSE rules are duly observed and appropriate PPEs are worn.



## CUSTOMER SERVICE

**First class service:** We deliver first class customer service. Our project team is available 24/7 to provide support during the execution phase of a project and post-commissioning.








Meeting the need for

Indigenous Professionalism









7 Nwogu Street  
Rumuobiakani Port-Harcourt  
P.O. Box 4624  
Rivers State, Nigeria

+234-817-746-8381  
+234-817-746-8384

spudserv@spud-ng.com

www.spud-ng.com

spudservices